



Yealink Network Technology CO., LTD

Yealink VC Series Video Conferencing System Quick Start Guide

V10.16

VC400: Applies to firmware version 30.10.0.16 or later

VC120: Applies to firmware version 40.10.0.16 or later

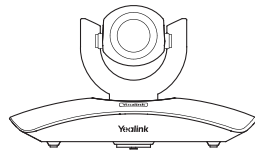
Table of Contents

Packaging Contents	1
Connections	2
Remote Control and Cable Ties Installation	3
Bracket and Camera Installation	4

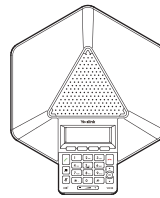
Main Screen	6
Network Deployment	7
Troubleshooting	10



Packaging Contents



VCC18 Camera



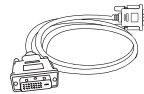
VCP40 Video Conferencing Phone



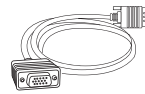
VC400/VC120 Codec



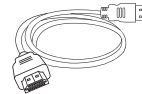
VCR10 Remote Control



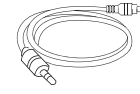
DVI Cable



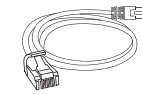
VGA Cable



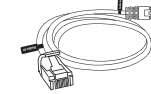
VC400: HDMI Cable×2
VC120: HDMI Cable×1



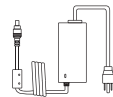
VC400: 3.5mm Audio Cable×1
VC120: None



Ethernet Cable
(2m)



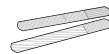
Ethernet Cable
(7.5m)



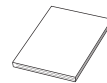
Power Adapter



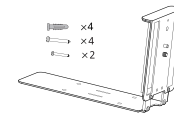
AAA Batteries ×2



VC400: Cable Ties ×7
VC120: Cable Ties ×5



Quick Start Guide



Camera Wall Mount Accessories

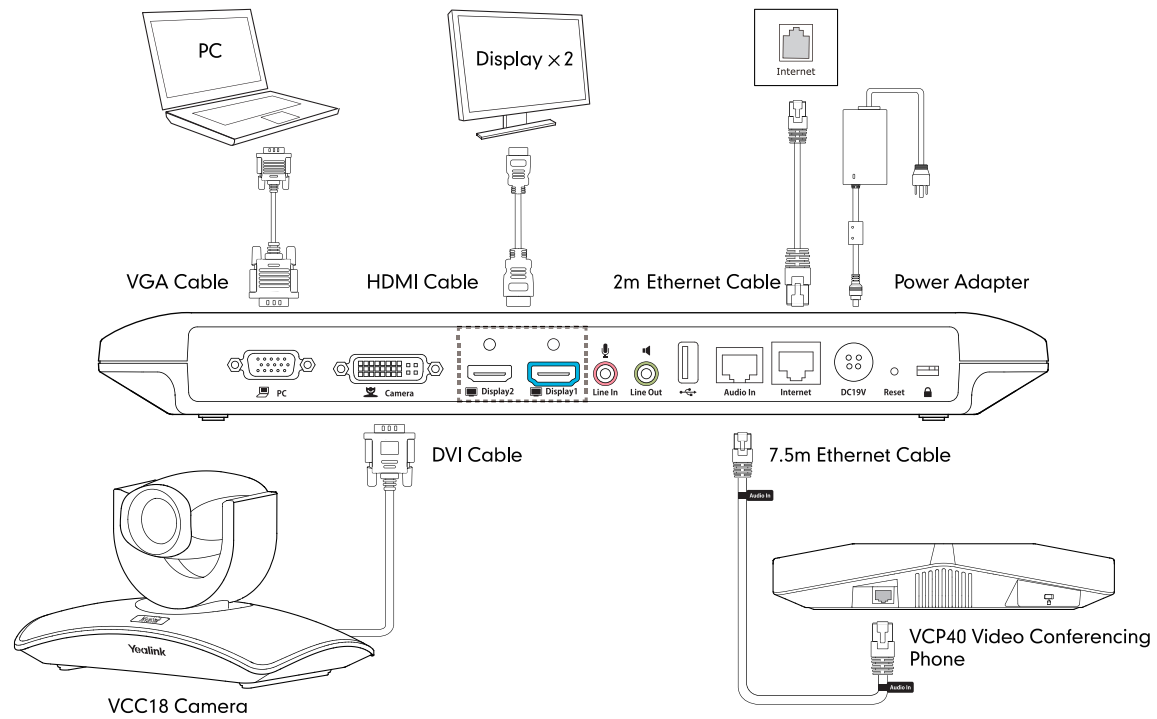


CPE80 Expansion
Microphone

Optional Accessories

💡 Please use the Yealink-customized DVI cable

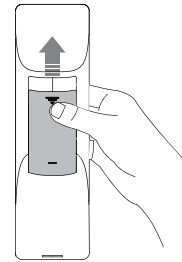
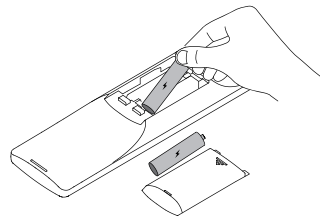
Connections



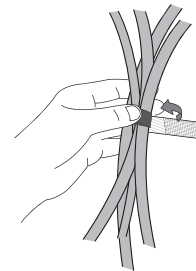
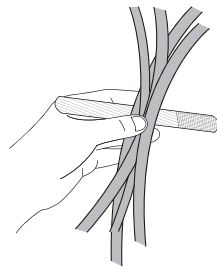
2

💡 Please connect to the Display1 port if you only have one display device

Remote Control and Cable Ties Installation



Install batteries

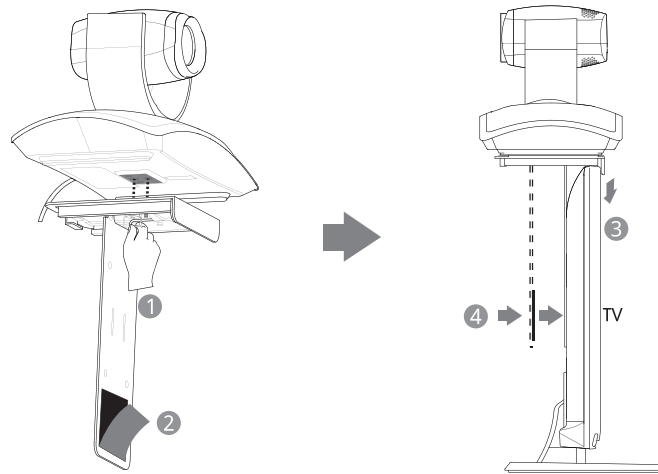


Fasten the cables with the cable tie

Bracket and Camera Installation

- Hanging Mode

Please chose the following installation mode when the thickness of the TV is less than 120mm



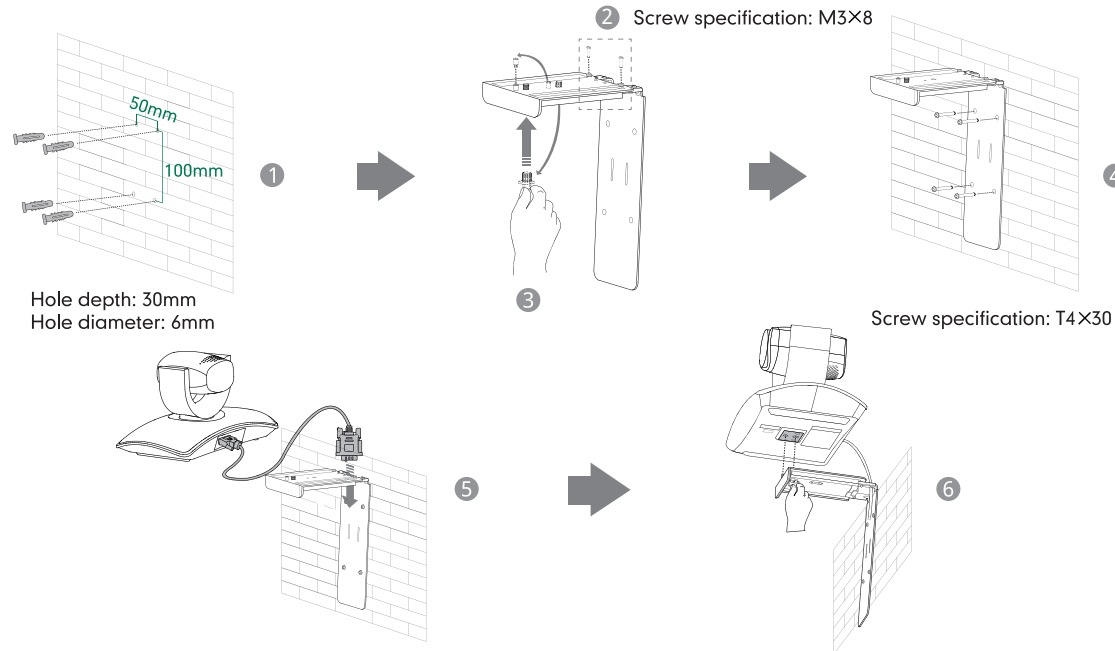
Steps to hang the camera: ① Lock the Camera ② Tear the Tape ③ Install the Bracket ④ Adjust the Bracket

4



Make sure that the bracket is attached correctly to the back of the TV

● Wall Mount Method



- Steps: 1 Punch holes & Insert expansion bolts 2 Lock the bracket with screws 3 Move the setscrews to the left holes, and then manually tighten the screws 4 Lock the bracket to the wall with screws 5 Connect DVI cable 6 Lock the camera

💡 The recommended height for camera positioning is 1.5m-1.8m

Main Screen



Network Deployment

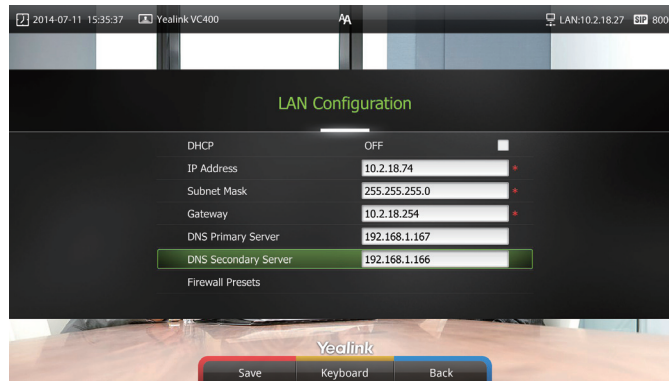
- To ensure that the VC400/VC120 work correctly, please configure it according to the conference role that it plays. If it is in the head office, please make sure that it can be reached from the public network. If it is in a branch office, please use an intelligent firewall to deploy it, or just follow the same steps as for the head office

Head Office

- At least one static public IP address is required in the head office to allow branch offices to connect. The recommended system configurations are as follows :
 - To deploy the VCS on a public network, you need to assign a static public IP address to the VCS.
 - To deploy the VCS in an Intranet, you must assign a static private IP address behind the firewall to the VCS. In the meantime, do port mapping on the firewall for VC400/VC120.

Configure a Static IP

- Firstly, configure a static IP for the VC400/VC120
- For example: you can use the remote control to configure the IP 10.2.18.74 to your VC400/VC120.
 - Menu->Advanced (Admin Password:0000)->LAN Configuration
 - Turn off the **【DHCP】**
 - Enter the IP Address, Subnet Mask, Gateway, DNS information in corresponding fields.



- Press **【Save】** to save the configuration, then the screen prompts **【Reboot now】** . Press **【OK】** to reboot the system.

Configure Port Mapping

If the VCS is deployed in an Intranet, you need to finish the following port mapping on the firewall:

Function	Port	Protocol Type
H.323 signal port	1720	TCP
Audio & Video media stream port	50000-50499	TCP/UDP
Web management port (optional)	443	TCP
SIP (optional)	5060-5061	TCP/UDP

Branch Office

- If you are in a branch office, following two options are suggested:
 - Option1:** Deploy the VCS following the same steps as for the head office. In this way, both inbound and outbound calls will be available.
 - Option2:** Deploy the VCS using an intelligent firewall, which means that plug and play is possible without any further firewall configuration, but only outbound calls are available.
- 💡 Please note that when the VCS is deployed with an intelligent firewall, you have to open ports (as shown below) permission if they are restricted
- 💡 It is recommended that you forward the web management port(443/TCP) to the public network, so that the head office can remotely manage the branch office.

Function	Port	Protocol Type
H.323 signal port	1720	TCP
Audio & Video media stream port	50000-50499	TCP/UDP
SIP (optional)	5060-5061	TCP/UDP

Bandwidth Requirements

- To ensure the best video conference performance , the recommended bandwidth for VC400\VC120 is as below:

Video Resolution	Recommended Bandwidth
Full HD 1080P	1.3Mb
People 1080P+Content 1080P	2.6Mb

- 💡 For more information on configurations, contact your system administrator.
- 💡 The bandwidth mentioned above is based on a two-way conference. Head office bandwidth should be increased in line with the growing number of connected branch offices .

Troubleshooting

- After installation and deployment, you can test the VC400/VC120 by dialing the Yealink Demo Room. If you can't dial out successfully, please contact your IT administrator to check the internal network configuration.
- Assume that you are A in head office. Using the configuration method explained in "Head Office" chapter on page 7, you find that you can call B in branch office or Yealink Demo, but that they cannot call you. The most likely reason is that the firewall or gateway in the environment does not support the H.323 ALG feature. In this situation, please take the following actions so that the

NAT feature on the VCS can solve this problem. (Carry out each step via the remote control)

- Menu->Advanced(Admin Password:0000)->NAT/Firewall
- Select **【Auto】** from the **【Type】** pull-down list, the system will obtain public IP Address automatically.
- If the system does not obtain a public IP Address automatically, select **【Manual Settings】** from the **【Type】** pull-down list, and then enter the public IP address in the **【Public IP address】** field.



Yealink Test Room IP: 117.28.251.50、117.28.251.51



For more information, visit the Yealink website:
www.yealink.com